

DIVAN-Z Installation Manual

Model No. AB-DVZF

Be sure to store this manual in a secure location together with the operation manual as it describes items that must be understood by the customer.

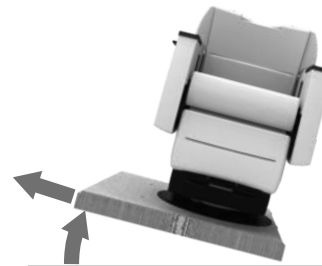
Installation Procedures

1. Move the chair to the installation location.

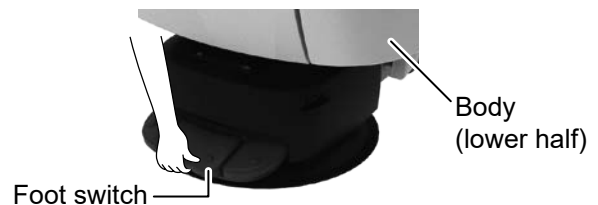
- Move the chair by holding the skid.
(Carrying the chair by the upper part is dangerous because the base could come off and drop.)



- When the chair is still on the skid, move the chair to the edge of the skid as shown in the figure on the right, tilt the chair and skid, and pull out the skid. Removing the skid without tilting it can result in the skid interfering with the mechanisms on the underside of the base, causing an abnormal noise to be emitted when the chair is rotated.

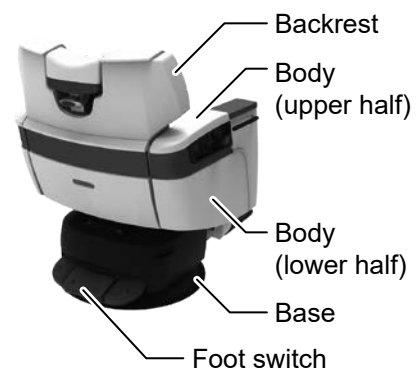


- After unloading the product from the skid, moving the chair by holding the metal plate under the foot switch and the body (lower half).



⚠ CAUTION

- Hold the base, foot switch, or the body (lower half) when performing procedures such as transporting, installing the rubber ring to, or positioning the chair. (Do not hold the natural wood parts.) When holding the chair, be careful not to damage the cape holders, wrinkle or dirty the leather, and that the base does not come off.
- If you need to hold the upper half of the body or the backrest it in a tilted position, take care not to apply force.
- Make sure not to apply excessive force that could damage the chair even when holding by the parts shown in the figure on the right.
- Do not push the backrest from behind. This may cause malfunction.

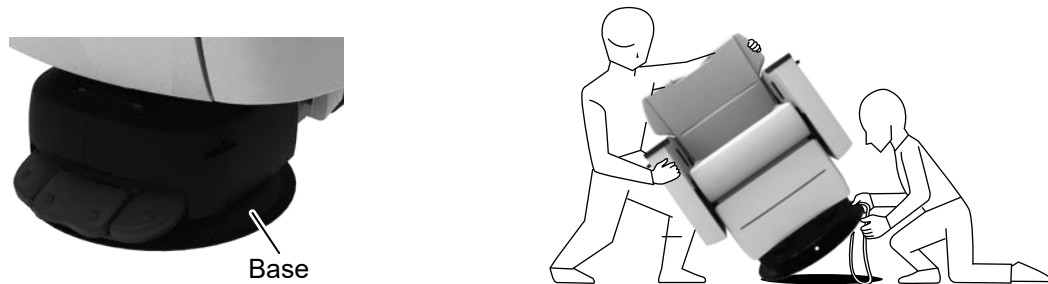


2. Attach the rubber ring to the base.

Determine the installation location. Lift the base off the floor and attach the rubber ring to the rim of the base.

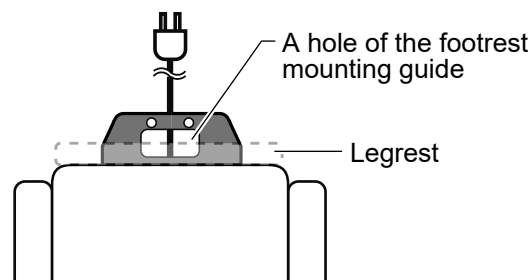
To prevent damage to the floor by the chair base, put a protective covering on the floor before working.

- It is easier to attach the rubber ring by lifting up one side of the chair at a time. Hold the body and shoulder part of the backrest to balance the force, and tilt the chair body to attach the rubber ring one side at a time. Do not apply excessive force to the armrest or other parts, or strike it from above when tilting the chair body.



During installation, ensure that the power cord outlet of the chair base is aligned with the chair front. Failure to follow this instruction may cause damage to the power cord.

*Make sure that the power cord is positioned in the center of the hole of the footrest mounting guide.



3. Connect the power plug to the outlet with ground terminal.

The chair must absolutely be grounded in order to prevent electric shock.

Be sure to ground the chair to prevent accident due to current leakage and to improve the noise-dampening performance of the control circuit.

Takara Belmont has no responsibility for any current leakage that results if the above-indicated procedures are not performed.

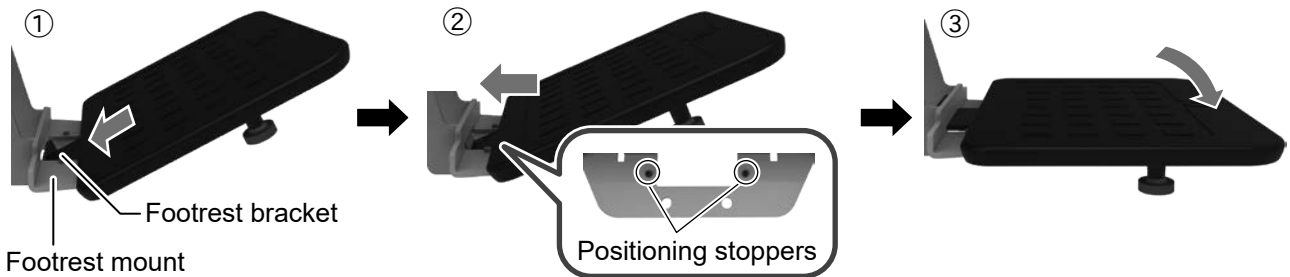
4. Check that the chair operates normally.

Turn the power on and check that the chair raises/lowers normally, the backrest raises/reclines normally, the legrest raises/lowers normally, and the rotation lock/release, preset function, and auto-return function operate normally.

5. Install the footrest.

Install the footrest

- ① Insert the footrest bracket into the hole of the footrest mount.
- ② Slide the footrest bracket to the back until it hits the stoppers.
- ③ Lower the footrest.
- ④ Make sure the footrest is level.

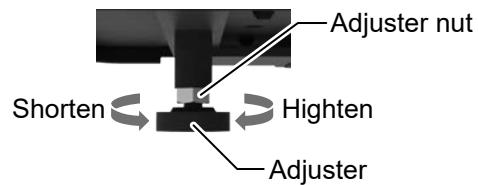


Adjusting the adjuster height

The adjuster, which prevents the chair from tipping over, is located on the underside of the footrest.

Adjusting the adjuster height

- ① Loosen the adjuster nut with wrench (opposite side 17mm) by turning it counterclockwise.
- ② Adjust the height by rotating the adjuster. counterclockwise → heighten clockwise → shorten
- ③ Fasten the adjuster nut with wrench (opposite side 17mm) by turning it clockwise.



⚠ WARNING

- After installing the footrest, make sure that the footrest bracket is firmly hooked to the footrest mount and that the footrest is kept level. Failure to do so may result in injury.
- Be careful when lifting and carrying the footrest, and of where you place it because the footrest is heavy. Dropping the footrest could result in injury or damage the floor.

⚠ CAUTION

When adjusting the height of the adjuster, make sure that the adjuster does not rub on the floor or catch the power cord when the chair is rotated. On the contrary, adjust the height so that the product does not fall over even if the customer gets on the footrest at exit/entry position.

Adjusting Preset Positions

Although the settings positions of the preset switches are previously set when shipped from the factory, you can change the settings to positions that match your customers.

Refer to "Adjusting preset positions" on p. 23 of the DIVAN-Z Operation Manual, and change the settings.

Usage environment

Temperature	0 ~ 40°C
Humidity	10 ~ 95% (No condensation)
Air pressure	700 ~ 1060 hPa

Transportation / Storage environment

Temperature	-20 ~ 70°C
Humidity	10 ~ 95% (No condensation)
Air pressure	700 ~ 1060 hPa