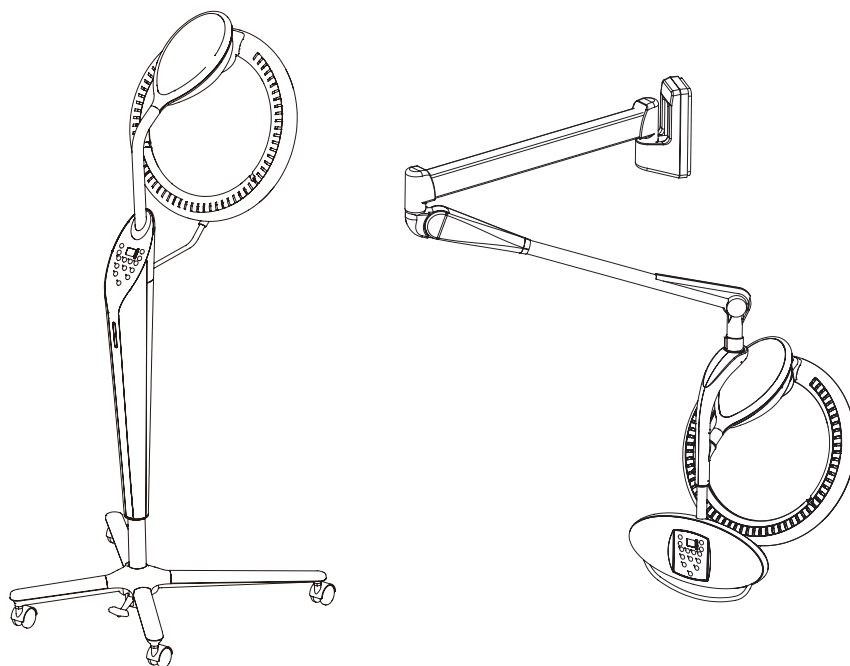


# ROLLER BALL F

## QUICK OPERATION GUIDE

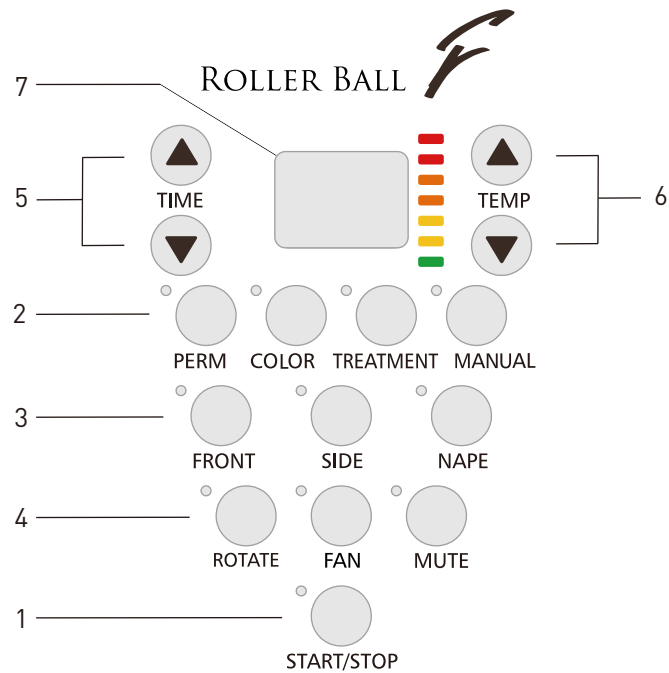




For details and safety information  
see the operating instructions.

<https://beauty.takarabelmont.co.jp/manual-site/>





Note: FAN ON SELECTED MODELS ONLY.

## 1 Start / Stop Key



## 2 Operation Mode Selection Keys



Hot double-process perms



Acidic dyes fixing agent



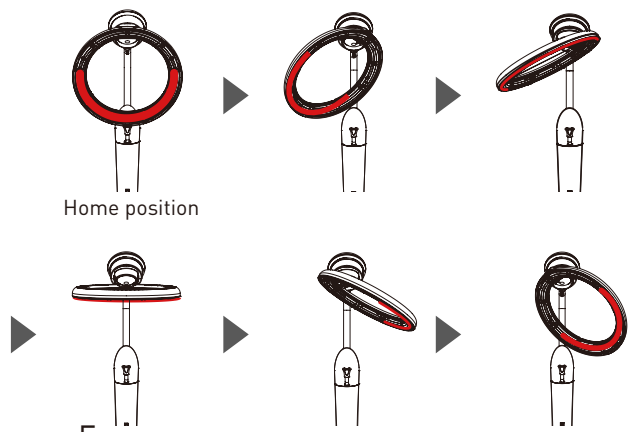
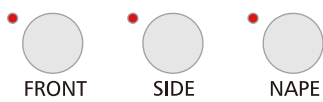
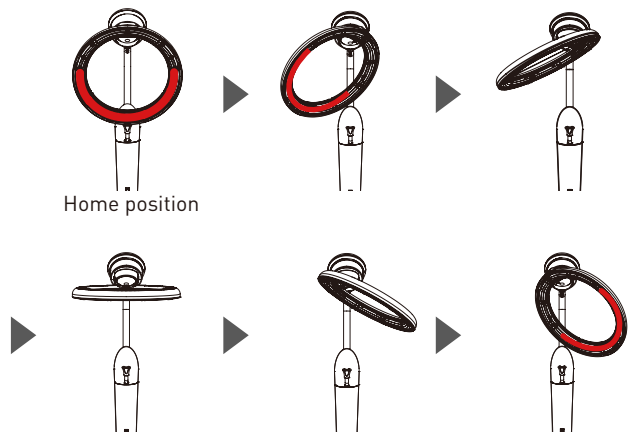
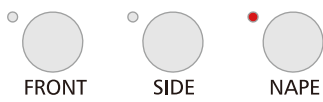
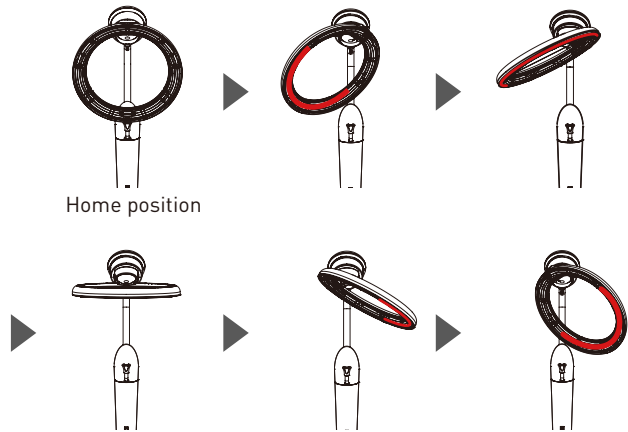
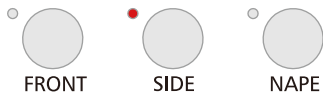
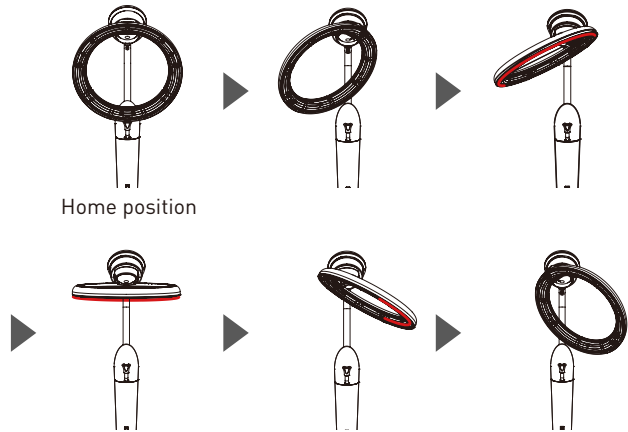
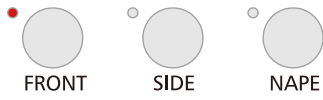
Acceleration of hair treatment



For the salon's unique techniques

3 Partial Mode Selection Keys

\*The whole ring partially lights up.



#### 4 Ring Rotation / Fan / Mute Keys



Ring rotation in the COLOR, PERM, TREATMENT modes  
\*Available only in manual mode.



Cooling process with fan  
\*Available only when selecting an option.



Sound mute for key operations and process completion

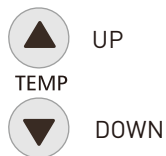
#### 5 Time Setting Keys



\*Maximum setup time: 60 minutes



#### 6 Temperature Keys / Indicator



(Display Color)

- █ RED
- █ ORANGE
- █ YELLOW
- █ GREEN

\*3° each from top to bottom  
RED = 52° , GREEN = 34°

#### 7 Display Panel

Error indication



Incorrect head position error



Interruption error

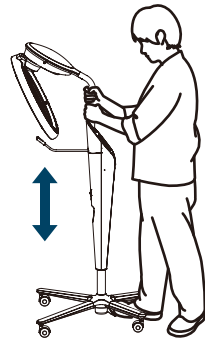


Temperature sensor detection error



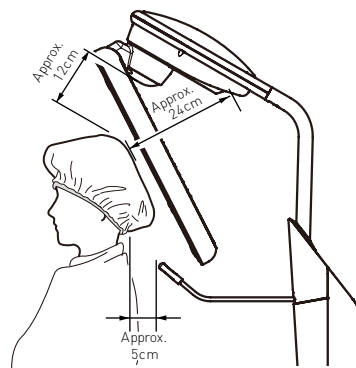
Unit positions error

### 1 Adjust the height using both hands

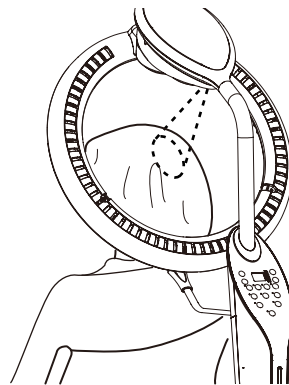


\*Only for AK-S23S / AK-S23SF

### 2 Correct Setting Position



### 3 Setting the Roller Ball F in the correct position



### 4 Alarm rings when the head position is misaligned

Misaligned position alarm! 



Movie

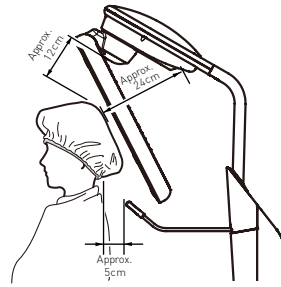


Perm



Treatment

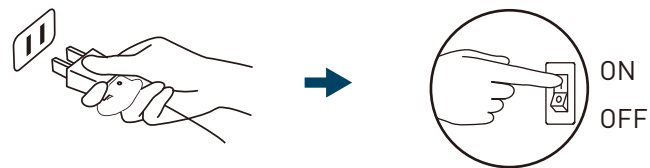
#### 1 Set the Roller Ball F in the correct position



Adjust temperature with temperature level setting without changing the equipment position if it's too hot.

Moving it away might cause the error unable to detect the head temperature, and even if trying to get the temperature closer to adequate temperature, the temperature of whole ring may be higher.

#### 2 Plug in and turn on the power switch



#### 3 Mode Selection



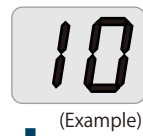
- 1 Select the preset mode
- 2 Adjust Temperature and Duration (option)
- 3 Select heating sections



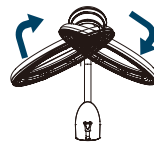
#### 4 Starting the operation



#### 5 During Operation

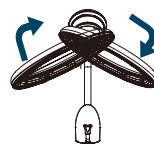


During heating time



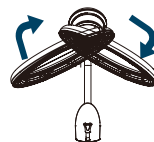
Please note that the whole ring never lights up regardless of the mode.

During cooling time



Cooling and the remaining time.  
\*Maximum setup time: 9 minutes

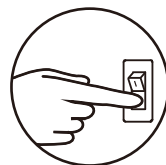
Times up



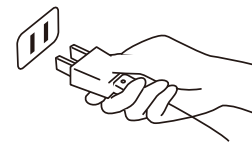
\*Making a sound



#### 8 Switch off and unplug when not in use



ON  
OFF





**TẬP ĐOÀN TAKARA BELMONT**

2-1-1, Higashishinsaibashi, Chuo-ku, Osaka, 542-0083, Japan

TEL : 81-6-6213-5945

FAX : 81-6-6212-3680

