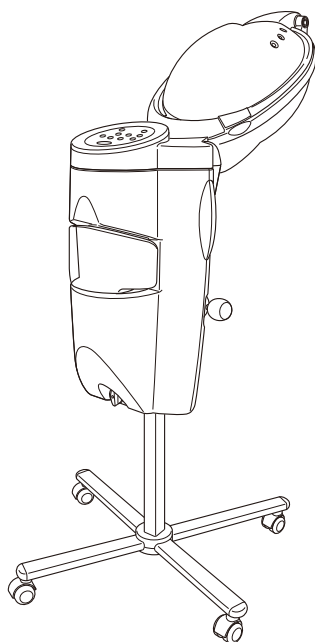


MICRO MIST

QUICK OPERATION GUIDE

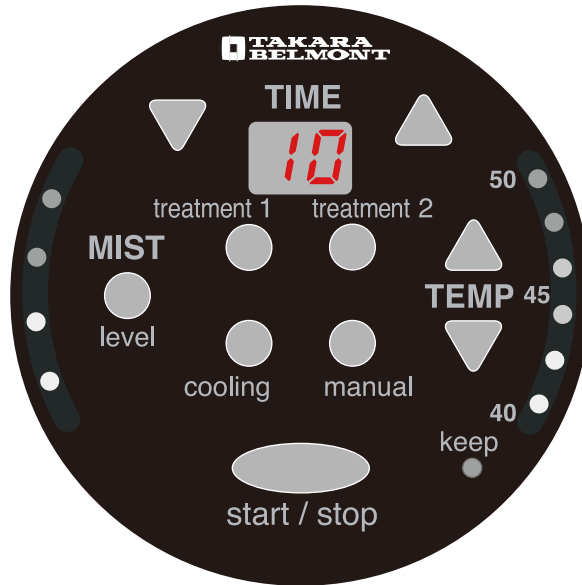


For details and safety information
see the operating manual.

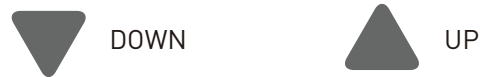
<https://beauty.takarabelmont.co.jp/manual-site/>



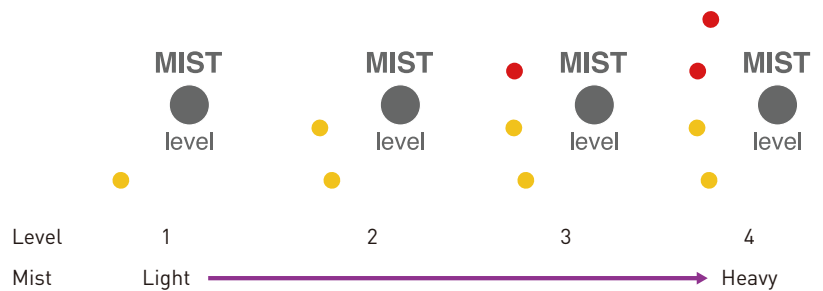
1 Control Panel



1 Time Setting Key



2 Mist Level Key



3 Cooling Key



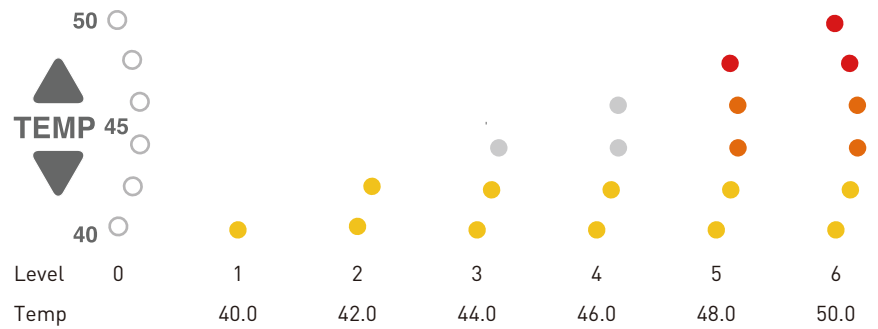
4 Start/Stop Key



5 treatment1/treatment2/manual Key

	Mist Level	Temp Level	Time	Cooling Time
treatment1	3	3	3	3
treatment2	1	1	1	1
manual	2	2	2	2

6 Temperature Level Key



7 Keep Lamp



8 Display Panel

State indication

Time indication

Cooling and the elapsed time

Shortage of water in the water-supply bottle. Re-filling distilled water.

Too much water is in the machine

Preheating

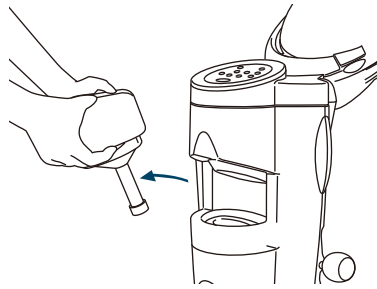
Error indication

Temperature detection unit error
Heater error

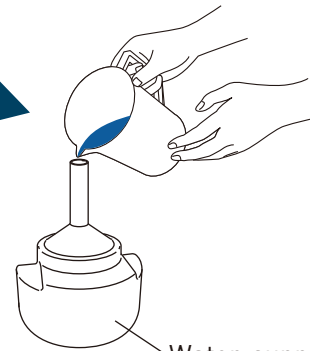
Temperature detection unit error

Water level detection unit error
float switch error

- 1 Pour water into the water-supply bottle
1. Remove the water-supply bottle Cap and pour distilled water.

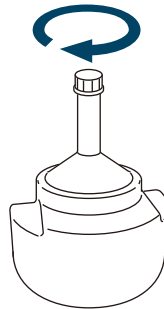


 **CAUTION**

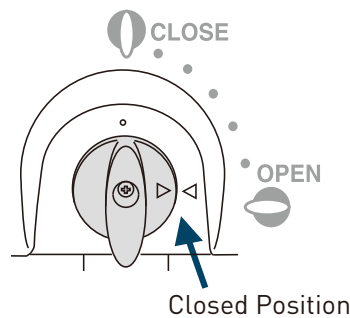


Water-supply bottle

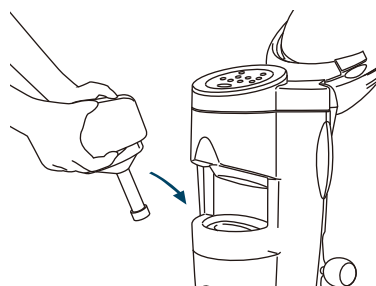
2. Close the water-supply bottle Cap.



3. Ensure that the drain cock has been closed.

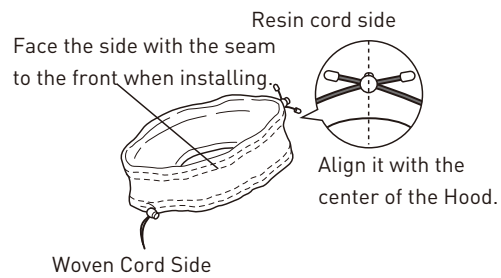


4. Insert the water-supply bottle into the water-supply bottle Holder.

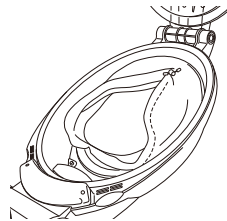


2 Fastening the Face Guard to the Hood.

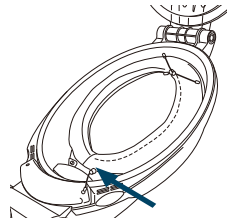
1. Loosen the strap at the bottom (the woven cord side) of the Face Guard.



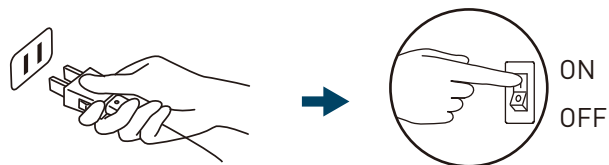
2. Attaching the Face Guard to the inside frame of the Hood.



3. Tighten the strap in the bottom section of the Face Guard.

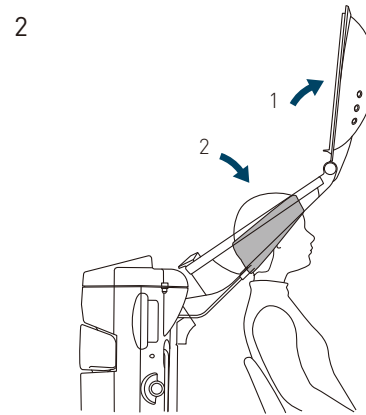
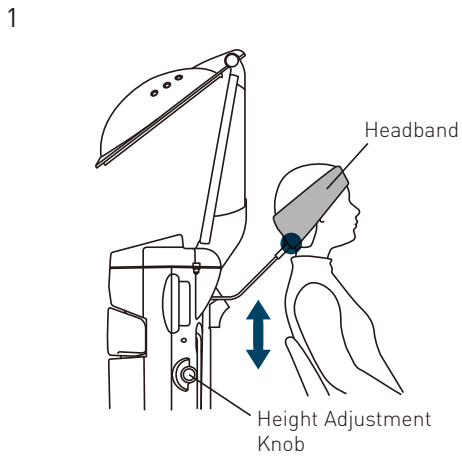


3 Plug in and switch on the power.

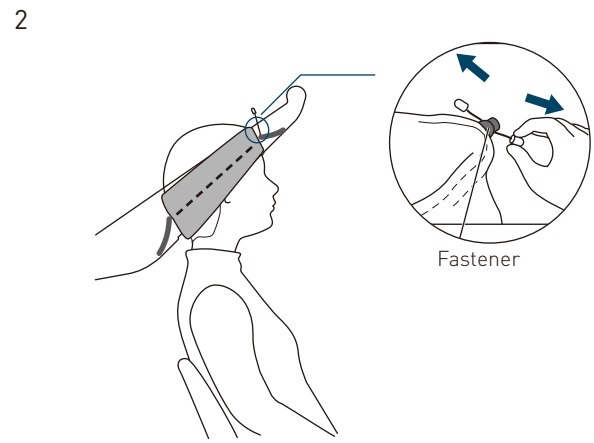
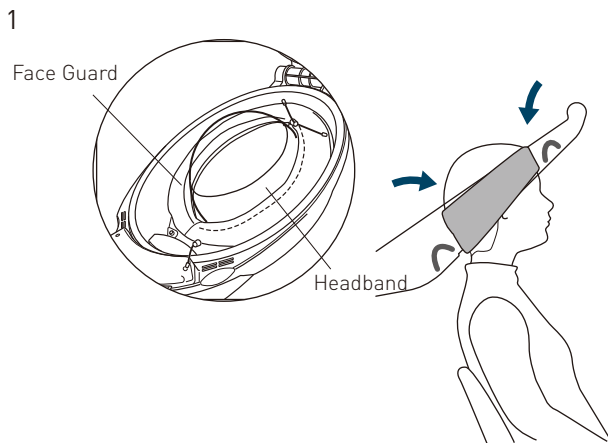


3 Operation procedures

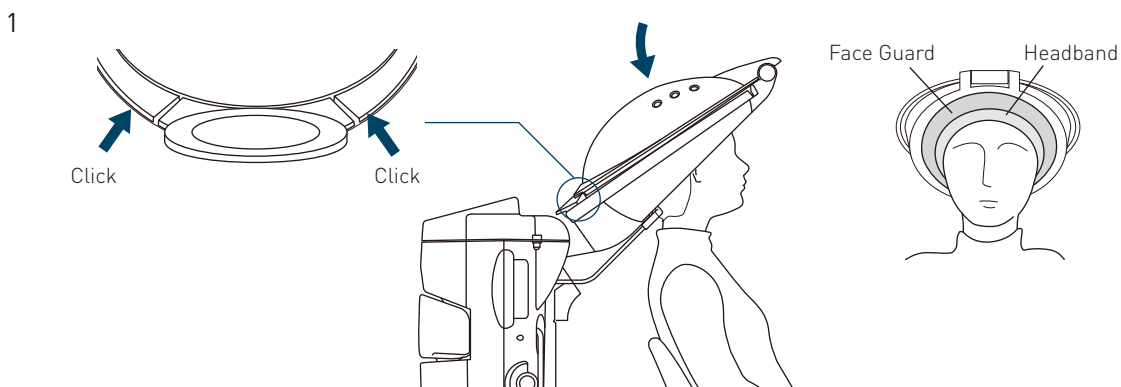
1 Set the main unit behind the customer.



2 Fitting the Face Guard.



3 Close the Upper Cover.



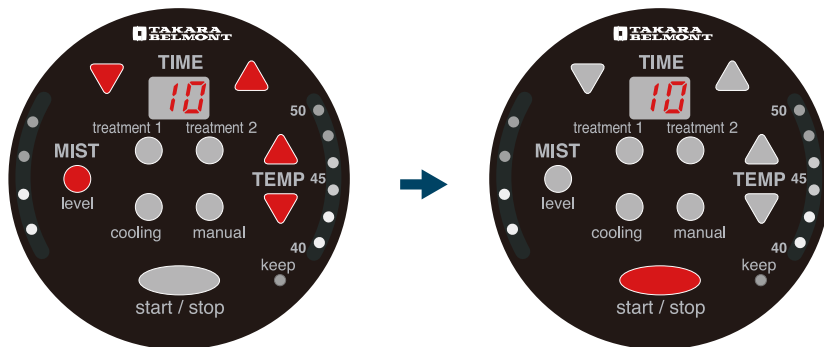
3 Operation procedures

4 Setting the Operating Mode.

1. Select the mode to be used from the treatment options below.

	Mist Level	Temperature Level	Time	Cooling Time
treatment 1	3	3	8 minutes	2 minutes
treatment 2	1	2	10 minutes	2 minutes
manual	4	5	5 minutes	2 minutes

2. Change the setting conditions using the Mist, Temperature and Time keys.

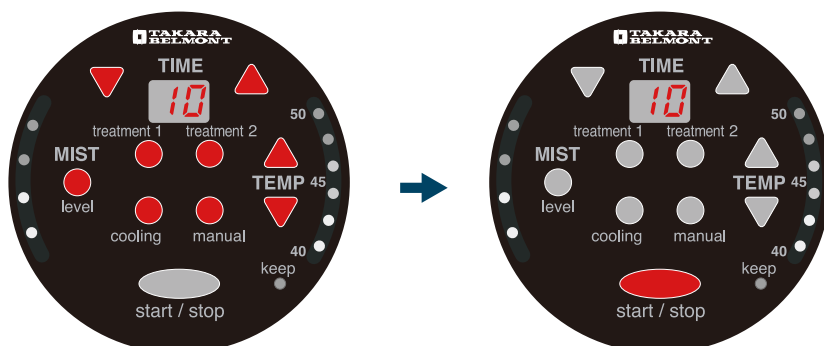


5 Operations during Mist Process.

1. Interrupting operations.



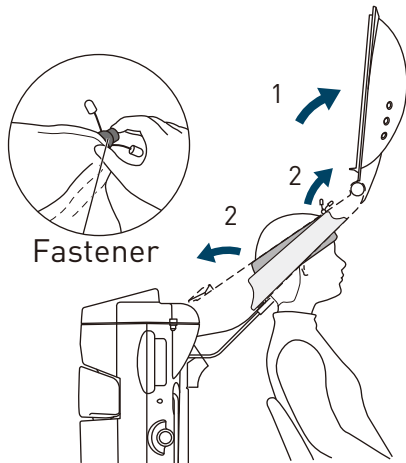
2. Changing operations while paused and resuming operations.



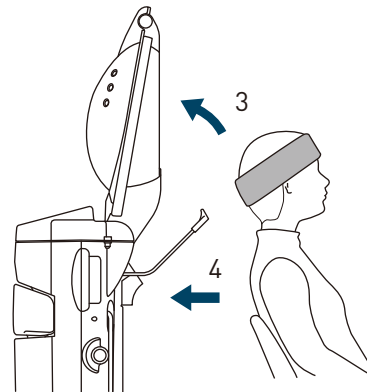
3 Operation procedures

6 After the Mist Programme is complete.

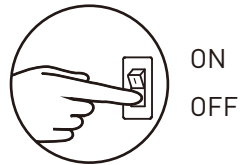
1



2

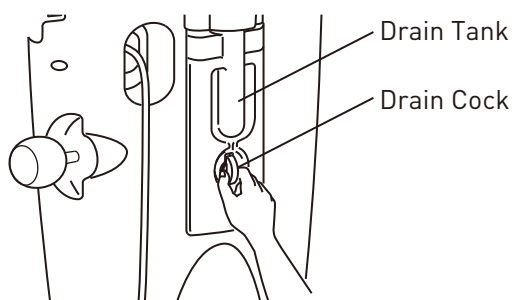


7 Switch off the power.

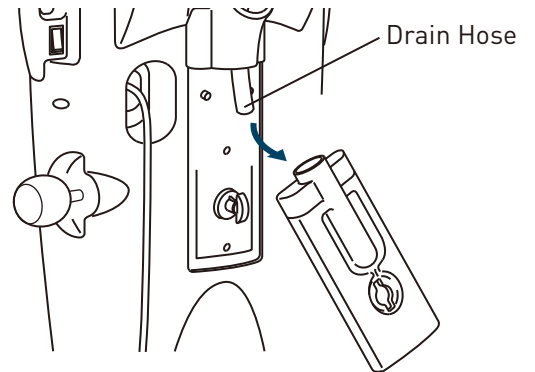


8 Empty the Drain Tank water.

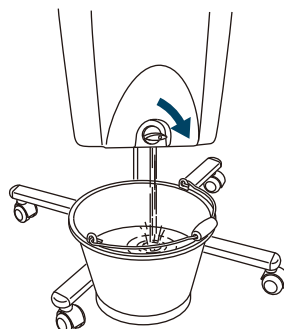
1



2



9 Empty the water in the internal section after operations are completed.





TAKARA BELMONT CORPORATION

2-1-1, Higashishinsaibashi, Chuo-ku, Osaka, 542-0083, Japan

TEL : 81-6-6213-5945

FAX : 81-6-6212-3680

